

CLARKE®



ABRASIVE CUT-OFF SAW

MODEL NO: CCO14C

PART NO: 6470161

OPERATION & MAINTENANCE INSTRUCTIONS



ORIGINAL INSTRUCTIONS

LS0618 - ISS 2

INTRODUCTION

Thank you for purchasing this CLARKE Abrasive Cut-Off Saw which is suitable for cutting any ferrous metals which are compatible with the type of abrasive wheel fitted.

Before attempting to use this product, please read this manual thoroughly and follow the instructions carefully. In doing so you will ensure the safety of yourself and that of others around you, and you can look forward to your purchase giving you long and satisfactory service.

GUARANTEE

This product is guaranteed against faulty manufacture for a period of 12 months from the date of purchase. Please keep your receipt which will be required as proof of purchase.

This guarantee is invalid if the product is found to have been abused or tampered with in any way, or not used for the purpose for which it was intended.

Faulty goods should be returned to their place of purchase, no product can be returned to us without prior permission.

This guarantee does not effect your statutory rights.

ENVIRONMENTAL RECYCLING POLICY



Through purchase of this product, the customer is taking on the obligation to deal with the WEEE in accordance with the WEEE regulations in relation to the treatment, recycling & recovery and environmentally sound disposal of the WEEE.

In effect, this means that this product must not be disposed of with general household waste. It must be disposed of according to the laws governing Waste Electrical and Electronic Equipment (WEEE) at a recognised disposal facility.

GENERAL POWER TOOL SAFETY WARNINGS



WARNING: READ ALL INSTRUCTIONS. FAILURE TO FOLLOW ALL INSTRUCTIONS LISTED BELOW MAY RESULT IN ELECTRIC SHOCK, FIRE AND/OR SERIOUS INJURY. THE TERM "POWER TOOL" IN THE WARNINGS REFERS TO YOUR SAW.

Save all warnings and instructions for future reference.

1) WORK AREA SAFETY

- a. **Keep work area clean and well lit.** *Cluttered or dark areas invite accidents.*
- b. **Do not operate power tools in explosive atmospheres, such as in the presence of flammable liquids, gases or dust.** *Power tools create sparks which may ignite the dust or fumes.*
- c. **Keep children and bystanders away while operating a power tool.** *Distractions can cause you to lose control.*

2) ELECTRICAL SAFETY

- a. **Power tool plugs must match the outlet. Never modify the plug in any way. Do not use any adapter plugs with earthed (grounded) power tools.** *Unmodified plugs and matching outlets will reduce risk of electric shock.*
- b. **Avoid body contact with earthed or grounded surfaces, such as pipes, radiators, ranges and refrigerators.** *There is an increased risk of electric shock if your body is earthed or grounded.*
- c. **Do not expose power tools to rain or wet conditions.** *Water entering a power tool will increase the risk of electric shock.*
- d. **Do not abuse the cable. Never use the cable for carrying, pulling or unplugging the power tool. Keep cable away from heat, oil, sharp edges or moving parts.** *Damaged or entangled cables increase the risk of electric shock.*
- e. **When operating a power tool outdoors, use an extension cable suitable for outdoor use.** *Use of a cable suitable for outdoor use reduces the risk of electric shock.*
- f. **If operating a power tool in a damp location is unavoidable, use a residual current device (RCD) protected supply.** *Use of an RCD reduces the risk of electric shock.*

3) PERSONAL SAFETY

- a. **Stay alert, watch what you are doing and use common sense when operating a power tool. Do not use a power tool while you are tired or under the influence of drugs, alcohol or medication.** *A moment of inattention while operating power tools may result in serious personal injury.*
- b. **Use personal protective equipment. Always wear eye protection.** *Protective equipment such as dust mask, non-skid safety shoes, hard hat, or hearing protection used for appropriate conditions will reduce personal injuries.*
- c. **Prevent unintentional starting. Ensure the switch is in the off-position before connecting to power source and/or battery pack, picking up or carrying the tool.** *Carrying power tools with your finger on the switch or energising power tools that have the switch on invites accidents.*
- d. **Remove any adjusting key or wrench before turning the power tool on.** *A wrench or a key left attached to a rotating part of the power tool may result in personal injury.*
- e. **Do not overreach. Keep proper footing and balance at all times.** *This enables better control of the power tool in unexpected situations.*
- f. **Dress properly. Do not wear loose clothing or jewellery. Keep your hair, clothing and gloves away from moving parts.** *Loose clothes, jewellery or long hair can be caught in moving parts.*
- g. **If devices are provided for the connection of dust extraction and collection facilities, ensure these are connected and properly used.** *Use of dust collection can reduce dust-related hazards.*

4) POWER TOOL USE AND CARE

- a. **Do not force the power tool. Use the correct power tool for your application.** *The correct power tool will do the job better and safer at the rate for which it was designed.*
- b. **Do not use the power tool if the switch does not turn it on and off.** *Any power tool that cannot be controlled with the switch is dangerous and must be repaired.*
- c. **Disconnect the plug from the power source and/or the battery pack from the power tool before making any adjustments, changing accessories, or storing power tools.** *Such preventive safety measures reduce the risk of starting the power tool accidentally.*
- d. **Maintain power tools. Check for misalignment or binding of moving parts, breakage of parts and any other condition that may affect the power tool's operation. If damaged, have the power tool repaired before use.** *Many accidents are caused by poorly maintained power tools.*

- e. **Store idle power tools out of the reach of children and do not allow persons unfamiliar with the power tool or these instructions to operate the tool.** *Power tools are dangerous in the hands of untrained users.*
- f. **Keep cutting tools sharp and clean.** *Properly maintained cutting tools with sharp cutting edges are less likely to bind and are easier to control.*
- g. **Use the power tool, accessories and tool bits etc. in accordance with these instructions, taking into account the working conditions and the work to be performed.** *Use of the power tool for operations different from those intended could result in a hazardous situation.*

5) SERVICE

- a. **Have your power tool serviced by a qualified repair person using only identical replacement parts.** *This will ensure that the safety of the power tool is maintained.*

ADDITIONAL WARNINGS FOR CUT-OFF SAWS

1. **IMPORTANT:** You should not operate this machine unless you are thoroughly familiar with metal cutting saws. If there is any doubt whatsoever, you should consult a qualified person.
2. Do not operate the machine until it is completely assembled and this entire manual has been read and understood.
3. Ensure the proper electrical regulations are followed.
4. Ensure the abrasive disc is securely mounted in accordance with these instructions before connecting to a power supply.
5. DO NOT over tighten the abrasive disc. This can cause stress, and could lead to the wheel shattering when under load.
6. Always check the abrasive disc for cracks before use.
7. Before switching the machine on, ALWAYS ensure the work is properly secured. ALWAYS use the vice, NEVER hand hold a workpiece.
8. Make all adjustments with the power OFF.
9. When starting a cut, always ease the tool into the work. A harsh or sudden impact could shatter the abrasive disc.
10. Ensure the abrasive disc reaches maximum speed before beginning a cut.
11. Never use the machine with the guards removed.
12. Ensure you use the correct type of abrasive disc for the type of material being cut. Metal cutting & masonry abrasive discs are available from your Clarke dealer. NEVER cut magnesium, wood, or non-ferrous metals.

ELECTRICAL CONNECTIONS



WARNING: READ THESE ELECTRICAL SAFETY INSTRUCTIONS THOROUGHLY BEFORE CONNECTING THE PRODUCT TO THE MAINS SUPPLY.

This product is provided with a standard 13 amp, 230 volt (50Hz), BS 1363 plug, for connection to a standard, domestic electrical supply. Should the plug need changing at any time, ensure that a plug of identical specification is used.

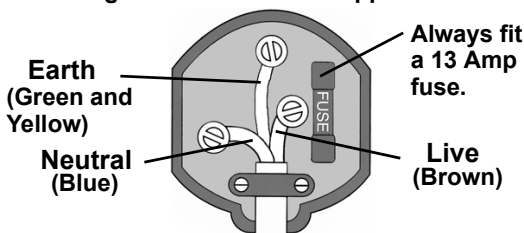


**WARNING: THE WIRES IN THE POWER CABLE OF THIS PRODUCT ARE COLOURED IN ACCORDANCE WITH THE FOLLOWING CODE:
BLUE = NEUTRAL BROWN = LIVE YELLOW AND GREEN = EARTH**

If the colours of the wires in the power cable of this product do not correspond with the markings on the terminals of your plug, proceed as follows.

- The wire which is coloured **Blue** must be connected to the terminal which is marked **N** or coloured **Black**.
- The wire which is coloured **Brown** must be connected to the terminal which is marked **L** or coloured **Red**.
- The **YELLOW AND GREEN** wire must be connected to the terminal which is marked **E** or \perp or coloured **green**.

Plug must be BS1363/A approved.



Ensure that the outer sheath of the cable is firmly held by the clamp

We strongly recommend that this machine is connected to the mains supply via a Residual Current Device (RCD)

If in any doubt, consult a qualified electrician. **DO NOT** attempt any repairs yourself.

UNPACKING AND ASSEMBLY

Unpack the saw carefully and ensure that the following items are in the box. In the event of any deficiencies you should contact your Clarke dealer immediately.

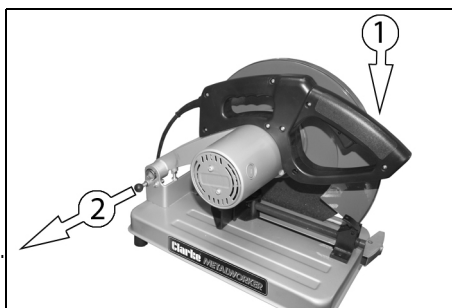
- Abrasive Cut-off Saw
- 355mm Cutting disc (supplied fitted)
- 8mm Hexagon Wrench

BEFORE USE

UNLOCKING / LOCKING

To unlock the saw and raise the motor arm.

1. Push down on the handle (1).
2. Pull the locking pin out slightly (2) to unlock the motor arm.
3. Release the pressure on the handle.
 - The motor arm will then raise into position.
 - Reverse step 2 when locking the motor arm down for storage.



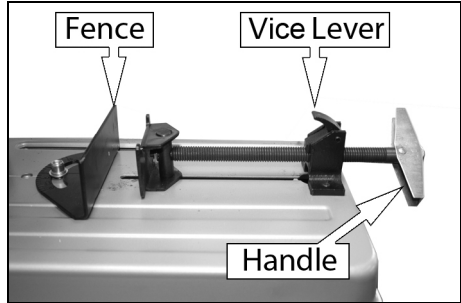
MATERIAL CLAMPING AND SUPPORT

- Angle iron should be clamped and cut with both legs resting against the base of the saw.
- A spacer block slightly narrower than the workpiece can be used to raise the workpiece if required.
- a long workpiece must be supported by a block so that it will be level with the top of the base. The cut-off end should be free to fall downward to avoid binding against the wheel.

OPERATION

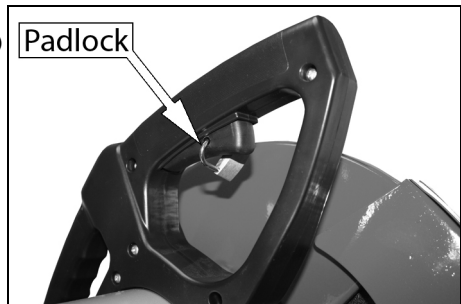
VICE OPERATION

1. Turn the handle counterclockwise to remove clamping pressure.
2. Lift the vice lever up.
3. Pull handle out as far as desired.
 - vice may be pushed forward into the work without turning the handle.
4. Lower the vice lever then tighten the vice on to the work using the handle.



TRIGGER SWITCH

1. To start the saw, pull the trigger switch.
2. To turn the saw off, release the trigger switch.
 - Wait a couple of seconds until the blade reaches full speed.
 - Keep hands and materials away from the wheel until it has come to a complete stop.
3. To prevent unauthorized use of the saw, install a padlock (not supplied) into the padlock hole in the trigger.



TIPS FOR MORE ACCURATE CUTS

- Allow the cutting disc to do the cutting. Excessive force will cause the cutting disc to glaze reducing cutting efficiency and/or to deflect causing inaccurate cuts.
- Adjust the fence angle.
- Make sure the workpiece is laying flat across the base.
- Clamp the workpiece securely to avoid movement and vibration.

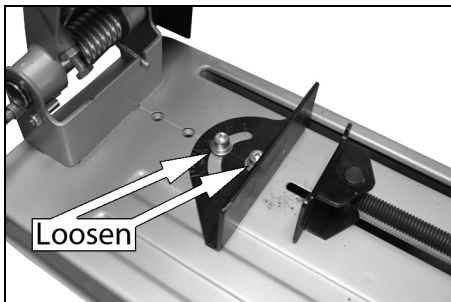
ADJUSTMENTS



WARNING: TURN OFF AND UNPLUG THE SAW BEFORE MAKING ANY ADJUSTMENTS. MAKE SURE THE TRIGGER SWITCH IS IN THE OFF POSITION.

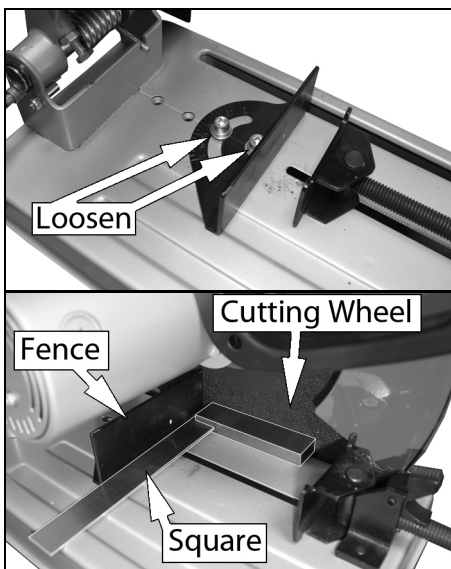
TO CHANGE THE CUTTING ANGLE

1. Use the hex wrench provided to loosen (do not remove) the two fence bolts.
2. Adjust the fence to the desired angle.
3. Re-tighten both fence bolts before use.
 - When making a mitre cut, the vice may not clamp securely, depending on the thickness of the workpiece and the mitre angle.
 - Other aids (such as spring, bar or C-clamps) will be necessary to secure the workpiece to the fence when making these cuts.



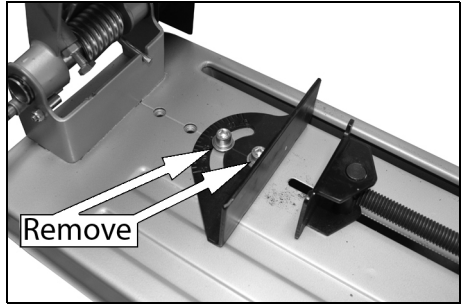
SQUARING THE FENCE TO THE BLADE

1. Disconnect the power supply.
2. Loosen the two fence bolts, push the arm down until the cutting disc lowers into the base.
3. Place a set square against the cutting disc and adjust the fence to rest against the square.
4. Securely tighten both fence bolts before use.



TO CHANGE THE SPACING BETWEEN THE FENCE AND VICE

1. Use the wrench provided to loosen and remove the two fence bolts.
2. Adjust the fence to the desired position.
3. Tighten the fence bolts securely before use.



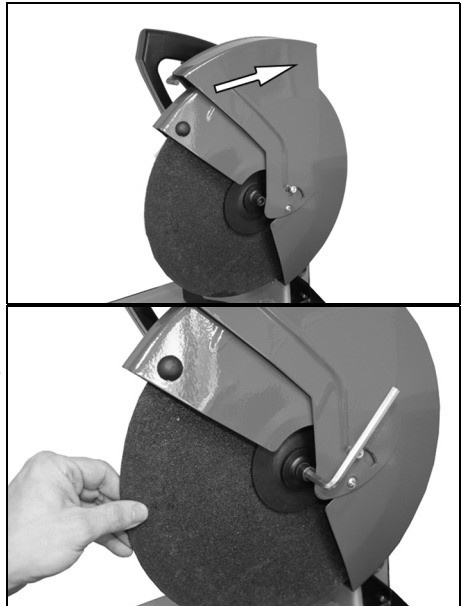
REMOVAL AND INSTALLATION OF CUTTING DISCS



WARNING: TURN OFF AND UNPLUG THE TOOL BEFORE MAKING ANY ADJUSTMENTS OR REMOVING OR INSTALLING CUTTING WHEELS. BE SURE THE TRIGGER SWITCH IS IN THE OFF POSITION.

Cutting discs are available from your Clarke dealer - Part Number: 6470800

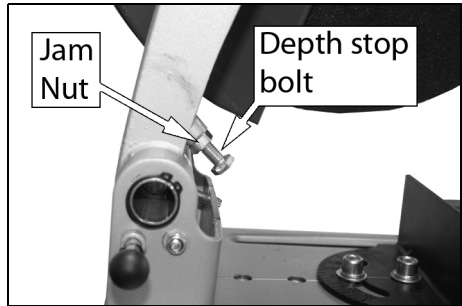
1. With the motor arm in the 'UP' position, rotate the blade guard out of the way as shown.
2. Hold the blade and use the 8mm hex wrench supplied to loosen and remove the bolt in the center of the cutting disc.
3. Remove the bolt, washer, outside flange and old cutting disc.
 - Make sure that the flange surfaces are clean and flat.
4. Install the new cutting disc by reversing the above steps.
 - Do not overtighten the bolt.



DEPTH STOP

The depth stop is set at the factory for a new 14" (355mm) cutting disc. This can be adjusted as the wheel wears.

1. Loosen the jam nut.
2. Loosen the depth stop bolt.
3. Adjust the bolt to desired height.
4. Then turn the jam nut until seated firmly against the casting.
 - Securely tighten the depth stop bolt before use.



CAUTION: WHEN CHANGING TO A NEW CUTTING DISC, READJUST THE DEPTH STOP TO THE ORIGINAL POSITION TO PREVENT CUTTING INTO THE SUPPORTING SURFACE.

MAINTENANCE

CLEANING



WARNING: BLOW DIRT AND DUST OUT OF ALL AIR VENTS WITH CLEAN, DRY AIR AT LEAST ONCE A WEEK. TO MINIMIZE THE RISK OF EYE INJURY, ALWAYS WEAR ANSI Z87.1 APPROVED EYE PROTECTION WHEN PERFORMING THIS TASK.

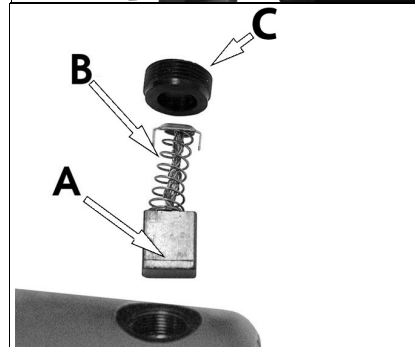
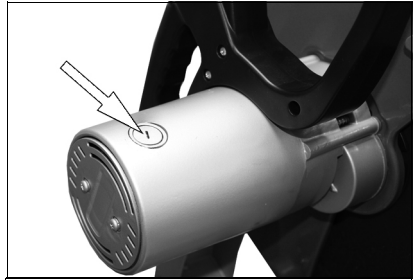


WARNING: NEVER USE SOLVENTS OR OTHER HARSH CHEMICALS FOR CLEANING THE NON-METALLIC PARTS OF THE TOOL. THESE CHEMICALS MAY WEAKEN THE PLASTIC MATERIALS USED IN THESE PARTS. USE A CLOTH DAMPENED ONLY WITH WATER AND MILD SOAP. NEVER LET ANY LIQUID GET INSIDE THE TOOL; NEVER IMMERSE ANY PART OF THE TOOL INTO A LIQUID.

CHANGING THE CARBON BRUSHES

These will naturally wear with use and require replacing. They should be checked periodically as follows:

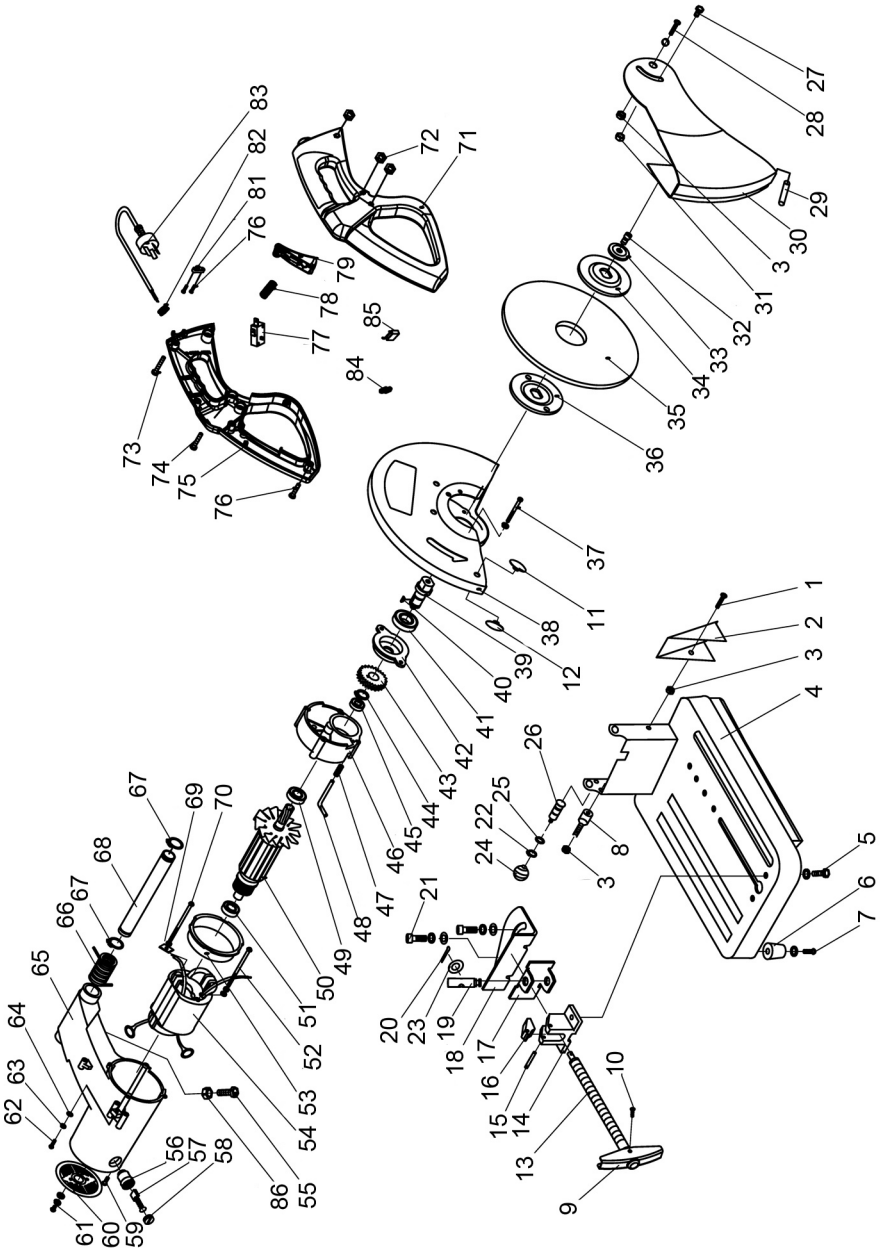
1. Unscrew and remove the plastic caps on the end of the motor with a screwdriver.
2. Pull out the brushes complete with springs and retainers.
 - Check the brush length. If the 'wear line ('A')' cannot be seen, the pair of brushes should be renewed.
3. Replace the brushes, taking care that the tabs on the end of the spring retainer ('B'), correctly enter the elongated chamber as you push it in and screw on the cap ('C').



SPECIFICATIONS

Voltage	230V AC @ 50Hz	
Input power	2200W	
Current Rating	9.5A	
No-load speed	3900 rpm	
Weight	14.1 kg	
Dimensions (L x W x H)	455 (head lowered) x 403 x 272 mm	
Max cutting dimensions (mm)	Round	115 dia @ 90°) - (95 dia @ 45°)
	Square	100 sq @ 90°) - (55 sq @ 45°)
	Rectangle	175 x 80@ 90°)* - (210 x 65@ 90°)† (100 x 55 @ 45°) *Fence in middle position †Fence in rear position
Sound Pressure Level (LPA)	90 dB(A)	
Sound Power Level (LWA)	103 dB(A)	
Sound Uncertainty Value (K)	3 dB(A)	
Vibration	< 2.5 m/s ²	

PARTS DIAGRAM



PARTS LIST

No	Description	No	Description	No	Description
01	Bolt M6x12	30	Side Cover Assembly	59	Screw M5x10
02	Spark Deflector	31	Nut M8	60	Rear Cover
03	Lock Nut M6	32	Bolt M10x20	61	Screw M5x10 + Washer
04	Base Assembly	33	Flange Washer	62	Screw M4x10
05	Bolt M8x12 + Washer	34	Outer Flange	63	Spring Washer 4
06	Rubber Foot	35	Cutting disc	64	Locking Washer 4
07	Bolt M6x25 + Washer	36	Inner Flange	65	Motor Housing
08	Stop Pin	37	Bolt M5x54 + Washer	66	Torsion Spring
09	Vice Handle	38	Fixed Cover	67	Circlip
10	Rivet	39	Output Shaft	68	Hinge Pin
11	Rubber Pad	40	Woodruff Key 4x13	69	Stator Wire Plate
12	Rubber Pad	41	Bearing	70	Bolt + Spring Washer
13	Threaded Rod	42	Front Cover	71	Handle Body (Right)
14	Vice Block	43	Primary Gear	72	Nut M5
15	Roll Pin	44	Circlip 8	73	M. Screw M5x32
16	Vice Lever	45	Bearing	74	M. Screw M5x42
17	Vice Pad	46	Middle Cover	75	Handle Body (Left)
18	Fence	47	Self-lock Pin Spring	76	M. Screw St3.9x16
19	Vice Pivot Pin	48	Limit Pin	77	Switch
20	Split Pin	49	Bearing	78	Trigger Spring
21	Fence Bolt 10x20	50	Armature	79	Trigger
22	Circlip	51	Bearing	80	Bolt St4.2x14
23	Spring Washer 5	52	Bolt M5x85 + Washers	81	Cable Clamp
24	Handle Ball	53	Support Ring	82	Cable Sleeve
25	Washer	54	Stator	83	Plug
26	Saw Head Lock Pin	55	Depth Stop	84	Inductor
27	Bolt M8x12	56	Carbon Brush Holder	85	Capacitor
28	Bolt M6x12 + Washer	57	Carbon Brush	86	Jam Nut
29	Fixed Pin	58	Brush Holder Cover		
30	Side Cover Assembly				
31	Nut M8				

When ordering spare parts, Use part number JICCO14C + item number above.

DECLARATION OF CONFORMITY



Clarke[®]
INTERNATIONAL

Hemnall Street, Epping, Essex CM16 4LG

DECLARATION OF CONFORMITY

This is an important document and should be retained.

We hereby declare that this product(s) complies with the following directive(s):

- 2006/42/EC *Machinery Directive.*
- 2014/30/EU *Electromagnetic Compatibility Directive.*
- 2011/65/EU *Restriction of Hazardous substances.*

The following standards have been applied to the product(s):

- EN 61029-1:2009+A11:2010, EN 61029-2-10:2010+A11:2013, EN 55014-1:2017,
- EN 55014-2:2015, EN 61000-3-2:2014, EN 61000-3-11:2000.

The technical documentation required to demonstrate that the product(s) meet(s) the requirement(s) of the aforementioned directive(s) has been compiled and is available for inspection by the relevant enforcement authorities.

The CE mark was first applied in: 2003

Product Description: 14" (355mm) Abrasive Cut Off Saw
Model number(s): CC014C
Serial / batch Number: 6470161
Date of Issue: 15/06/2018

Signed:

J.A. Clarke
Director

A SELECTION FROM THE VAST RANGE OF

Clarke®

QUALITY PRODUCTS

AIR COMPRESSORS

From DIY to industrial, Plus air tools, spray guns and accessories.

GENERATORS

Prime duty or emergency standby for business, home and leisure.

POWER WASHERS

Hot and cold, electric and engine driven - we have what you need

WELDERS

Mig, Arc, Tig and Spot. From DIY to auto/industrial.

METALWORKING

Drills, grinders and saws for DIY and professional use.

WOODWORKING

Saws, sanders, lathes, mortisers and dust extraction.

HYDRAULICS

Cranes, body repair kits, transmission jacks for all types of workshop use.

WATER PUMPS

Submersible, electric and engine driven for DIY, agriculture and industry.

POWERTOOLS

Angle grinders, cordless drill sets, saws and sanders.

STARTERS/CHARGERS

All sizes for car and commercial use.



PARTS & SERVICE: 0208 988 7400
E-mail: Parts@clarkeinternational.com or Service@clarkeinternational.com
SALES: UK 01992 565333 or Export 00 44 (0)1992 565335

Clarke INTERNATIONAL Hemnall Street, Epping, Essex CM16 4LG
www.clarkeinternational.com